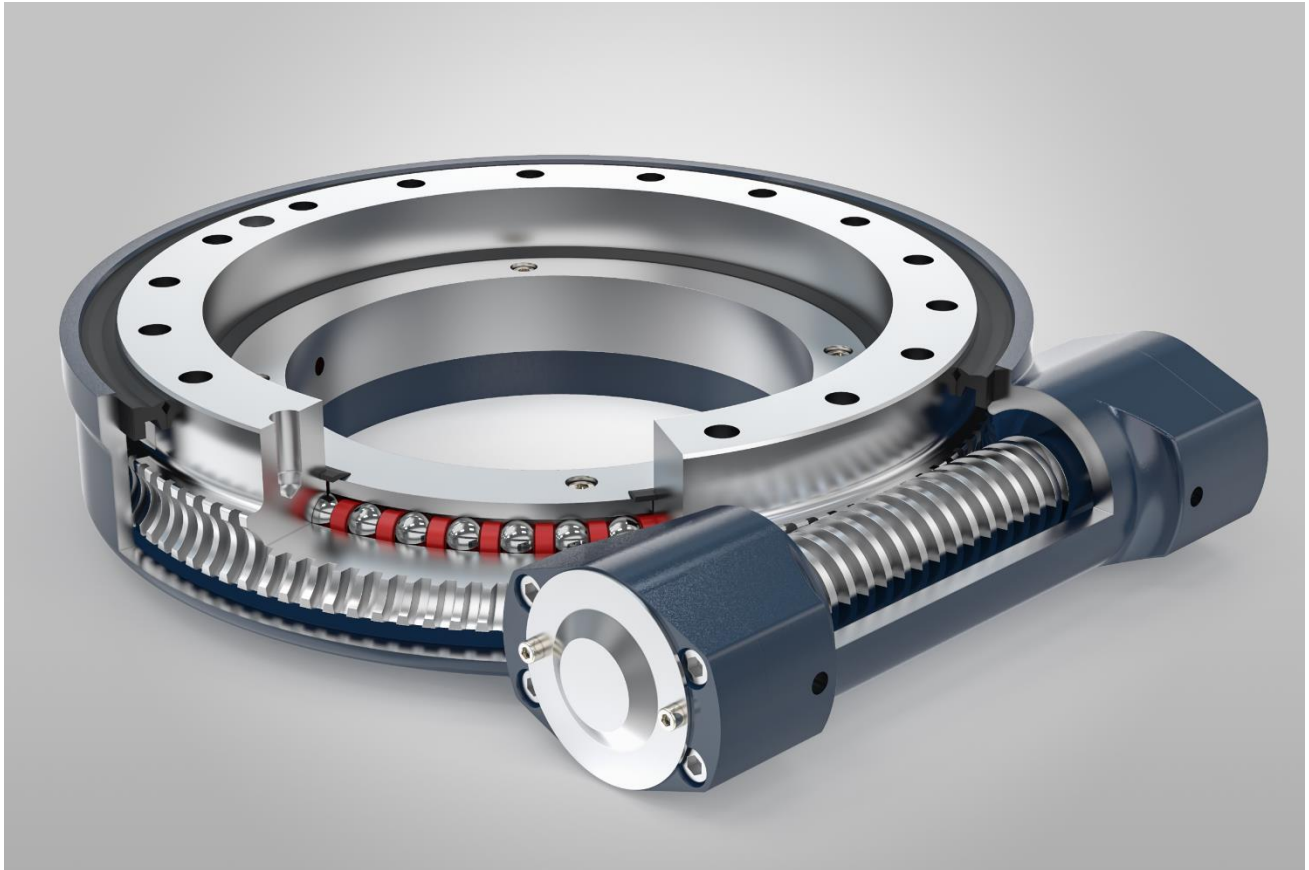


## Overview

# Titanus Slew Drives

**compact. strong. versatile.**



A slew drive is a complete, **ready to install system** that consists of a ball slewing ring (bearing), drive train, and completely enclosed housing.

Slew drives are **an elegant solution for when high forces are at play and limited space is available.**

Steering **gearboxes** for the undercarriages of heavy-duty vehicles, **loading cranes, building machinery** as well as **agricultural and forestry machinery** are areas where slew drives are an innovative alternative.

### Advantages

- **Long service life** design
- **Low maintenance** due to protective housing
- **Simple integration** into existing applications
- **Compact design** allowing maximum load capacity
- **One slew drive** replaces both slew ring & pinion
- **Available off the shelf** in 6 different sizes

# Technical Data

## Titanus Slew Drives

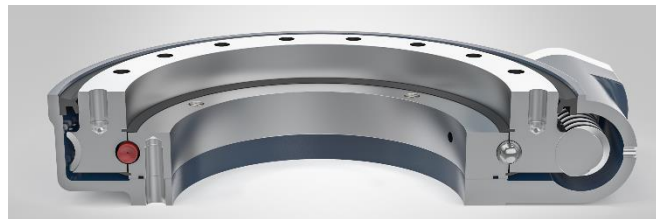
### always in stock

#### Technical features across product line

Raceway diameter	175 mm to 630 mm -- check
Maximum torque	up to approx. 342,000 N.m
Maximum tilting moment	310,000 N.m
Weight	up to approx. 240,000 kg ?? WGE/630: 2360 axial = 240tons)??
Lubrication	Oil or grease marco, need more specific?

#### Easy maintenance

- Reduced need for frequent lubrication
- Perfect for difficult access situations
- Less contamination within the bearing
- Improved lubrication properties



SLEW DRIVE Drawing	Nominal Size OD x ID x Thk	Output Torque	Moment Torque	Axial Load	Radial Load	Worm Gear Ratio
<a href="#">WGE/175</a>	276 x 105 x 100mm	3.5 kN.m	14.2 kN.m	220 kN	90 kN	47:1
<a href="#">WGE/223</a>	350 x 145 x 108mm	8.0 kN.m	35.6 kN.m	578 kN	215 kN	62:1
<a href="#">WGE/342</a>	460 x 265 x 110mm	10.8 kN.m	71.2 kN.m	960 kN	360 kN	86:1
<a href="#">WGE/430</a>	570 x 332 x 108mm	12.9 kN.m	142.4 kN.m	1166 kN	435 kN	104:1
<a href="#">WGE/540</a>	693 x 425 x 130mm	28.7 kN.m	203 kN.m	1598 kN	640 kN	90:1
<a href="#">WGE/630</a>	793 x 525 x 130mm	34.2 kN.m	310 kN.m	2360 kN	945 kN	104:1

#### Applications

• Steering gear	• Handling equipment	• Grab tools	• Cranes
• Defence equipment	• Construction machinery	• Attachment tools	• Working platforms
• Heavy Load Platforms	• Commercial vehicles	• Satellite antennas	• Lifting gear